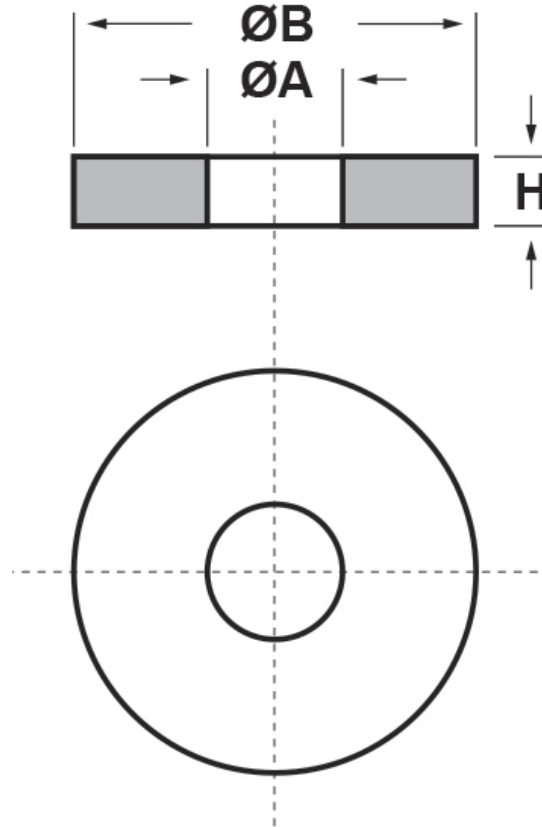




**SCHEDA ARTICOLO**

Articolo: ROS 75 PE-LD NERO - Codice EZ: 334898

06/12/2025



The drawing is indicative and the proportions may not correspond to the table or real dimensions.

ITEM	Color	Material	ØA mm	ØB mm	H mm
ROS 75 PE-LD NERO	black	PE-LD	10	20	2

Material: polyethylene (PE-LD), polyamide 66 (PA66) and polyamide 66 reinforced with glass fiber (PA66-RV).

Color: natural, white, black.

Use temperature: +50°C / max +60°C (for PE-LD), +90°C / max +105°C (for PA66), max +120°C (for PA66-RV)

Flammability: antifiamma UL94-HB (PA 66-RV e PA 66).

THE ITEMS FOR WHICH THE QUANTITY PER PACKAGE IS NOT SPECIFIED ARE ON REQUEST AND SUBJECT TO A MINIMUM QUANTITY AVAILABLE TO BE REQUESTED AT OUR SALES OFFICE.

Tutte le informazioni e i dati riportati sono indicativi e possono essere soggetti a variazioni senza preavviso

**ELEKTROZUBEHÖR SPA**

**Sede:**  
Via F.lli Bronzetti, 24  
20129 Milano (Italy)

Tel.: +39 02 701471  
C.F. e P. IVA: 00729140152  
Capitale Sociale: € 260.000

**Centro logistico:**  
Via Cadorna, 66/A  
20055 Vimodrone MI

Registro imprese: n° 92394 Tribunale di Milano  
R.E.A.: 460657 - INTRASTAT: IT 00729140152  
Posizione Import: MI 007993

