

CORNICE (214x90 mm)

LARGE MODULAR FLANGES TO BE CUSTOMIZED WITH SEAL IP 65 - "IP-FLANGE" -

ITEM: IP-FL PS21-IF66

Codice EZ: request the code from our sales office

Material: frames and inserts made of glass fiber reinforced polypropylene and halogen-free TPE (UL approved materials).

Color: light gray RAL 7035, black RAL 9005.

Use temperature: -20°C / +125°C

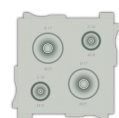
Features: these flanges constitute an innovative product. They are easy to assemble, have a very small footprint and an avant-garde design. They allow you to install numerous cables and ensure the protection of components inside the equipment.

They consist of a frame (dimensions 214x90 mm) and inserts that must be chosen according to the size and quantity of cables to be installed. The inserts are hooked to each other, then inserted into the frame; if necessary they can be disassembled and replaced with others. Furthermore, the inserts are equipped with a membrane that can be easily pierced by the cable as it passes through it, therefore without the need to use any tools. The IP 65 seal is guaranteed on the entire flange regardless of the number of cables installed. Possibility of assembling cable glands and cable glands with "IP-BLOCK" cable clamp. To make the wall holes on which to apply the flanges, refer to the "WALL HOLE TEMPLATE" drawing.

On request: for quantities, the flanges can be supplied in other colors. Furthermore, as an alternative to making the wall holes as per the "WALL HOLE TEMPLATE" drawing, metal plates can be supplied with pre-drilled holes for the correct assembly of the flanges.

IP protection: IP 65 according to EN 60529 specifications.

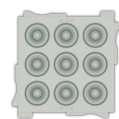
Regulations and Certifications: they comply with the SEMKO regulation.



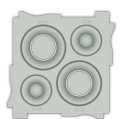
IP-FL PS21-IA



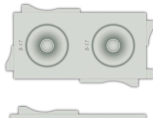
IP-FL PS21-IB



IP-FL PS21-IC



IP-FL PS21-ID



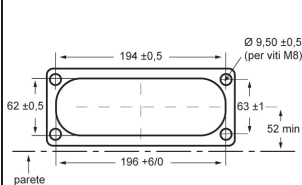
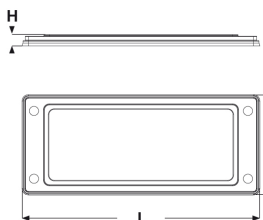
IP-FL PS-IF



IP-FL PS-IG



IP-FL PS-IH



DIMA FORI PARETE

The drawing is indicative and the proportions may not correspond to the table or real dimensions.

ITEM	Color	Description	n. cables max	n. cables/Ø ext. min - max cable mm	L mm	And mm	H mm	pack pcs.
IP-FL PS21-IF66	black RAL 9005	insert	2	2 (M25)/8-17	34	68	-	10

* The length and width of the frame have a tolerance of +6 mm. ** This insert is not equipped with a membrane but is designed for the assembly of cable glands or cable glands with "IP-BLOCK" cable clamp.

Tutte le informazioni e i dati sono indicativi e possono essere soggetti a variazioni senza preavviso

ELEKTROZUBEHÖR SPA

Sede:
Via F.lli Bronzetti, 24
20129 Milano (Italy)

Tel.: +39 02 701471
C.F. e P. IVA: 00729140152
Capitale Sociale: € 260.000

Centro logistico:
Via Cadorna, 66/A
20055 Vimodrone MI

Registro imprese: n° 92394 Tribunale di Milano
R.E.A.: 460657 - INTRASTAT: IT 00729140152
Posizione Import: MI 007993

